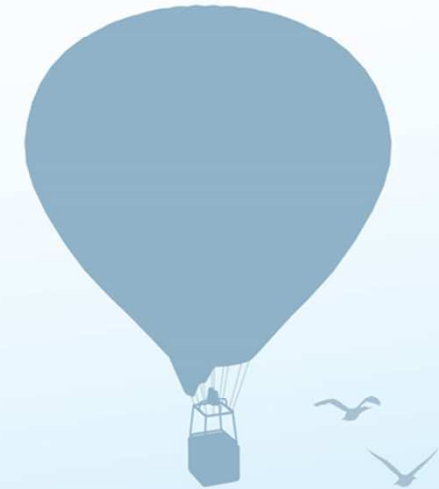




Integrated Care: Trafford's Journey

3rd December 2014

Diane Eaton



Timeline

February 2009

Trafford PCT approves strategy to develop integrated care

Autumn 2009

PCT invites expressions of interest around providers around delivering integrated care

2007

CYP integrated area model established

April 2009

Provider/commissioner separation between Trafford PCT and community health services

April 2010

£2million from PCT to fund "proof of concept year" around vertical integration of community health, acute services and "vanguard" GP practices

April 2011

Trafford community health services goes into Bridgewater

December 2010

Trafford Healthcare Trust announces it is seeking acquisition; community health services can no longer be integrated

Focus shifts to adult health and social care integration

October 2011

Unscheduled Care Business Case submitted, ultimately resulting in the commissioning of the Community Enhanced Care Service

March 2012

Health and Social Care Act receives royal assent

April 2012

Trafford Healthcare Trust subsumed into Central Manchester Foundation Trust

November 2013

Community Enhanced Care service launched - aim to reduce admission to acute services

April 2013

PCFT takes over operation of Trafford community health

April 2014

Adult Integrated Health and Social Care Model phase 1 initiated

Timeline

April 2014

Gantt chart
and project
objectives
established

Sub Groups commence
work

Regular updates to
PMG

Staff Road shows
July 2014

Project lead seconded

Project Steering Group
and framework

- Business support
- HR & OD
- New Working Models

Phase 1 consultation on
Management Structure – July 2014

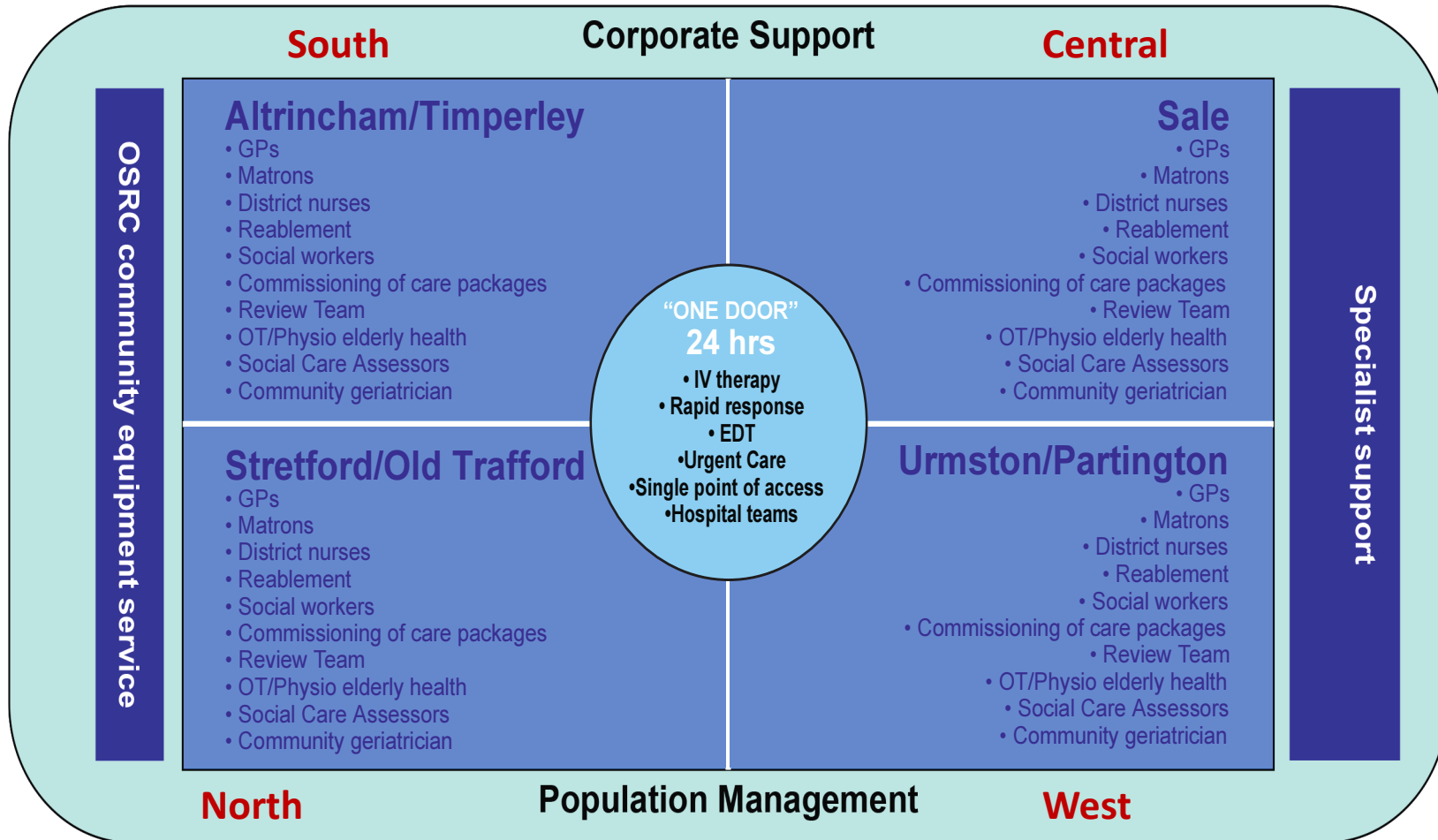
Consultation closes – end August

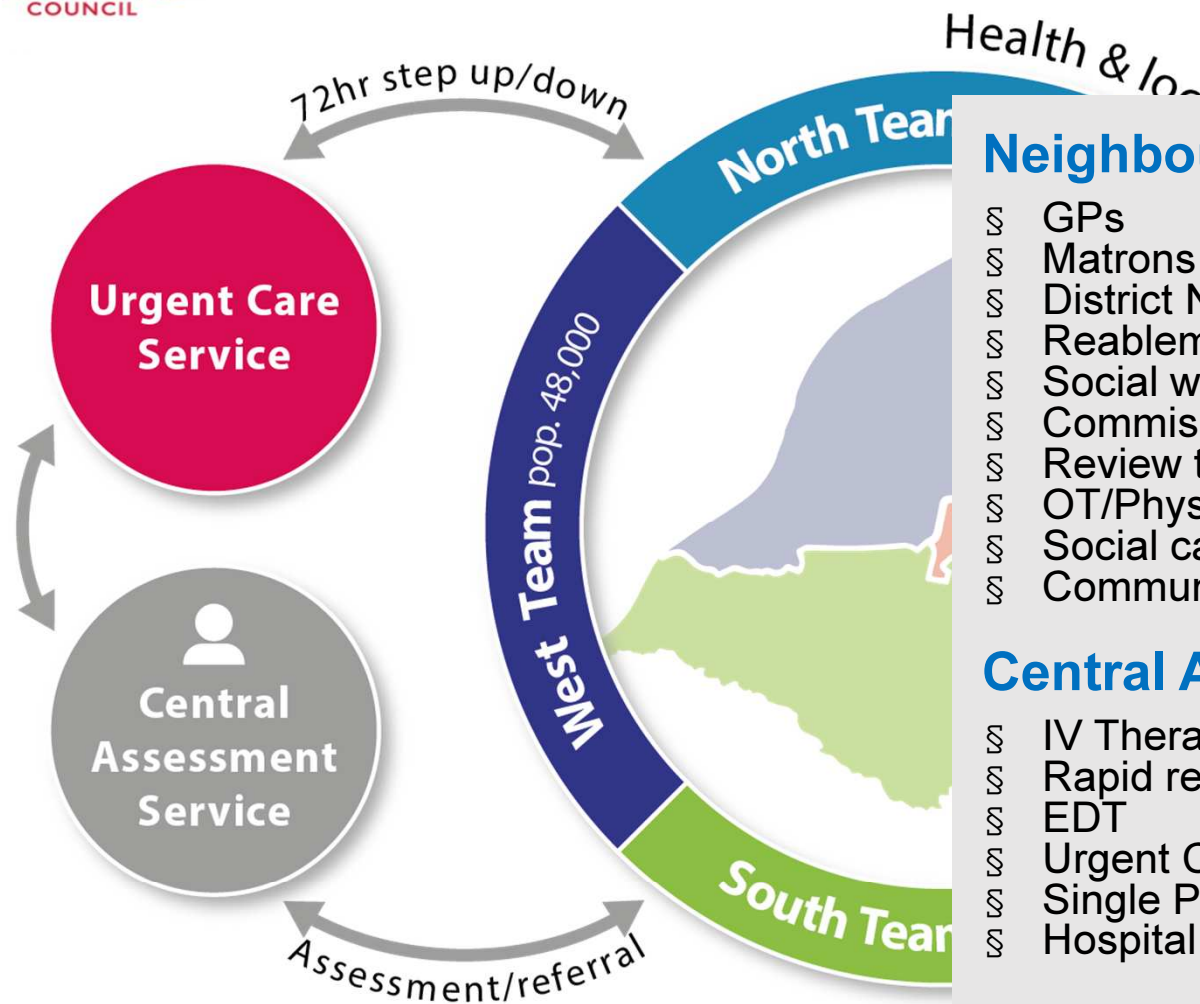
Sept HoS interviews
Oct – Operational Managers

OCTOBER 2014



The Service Delivery Model





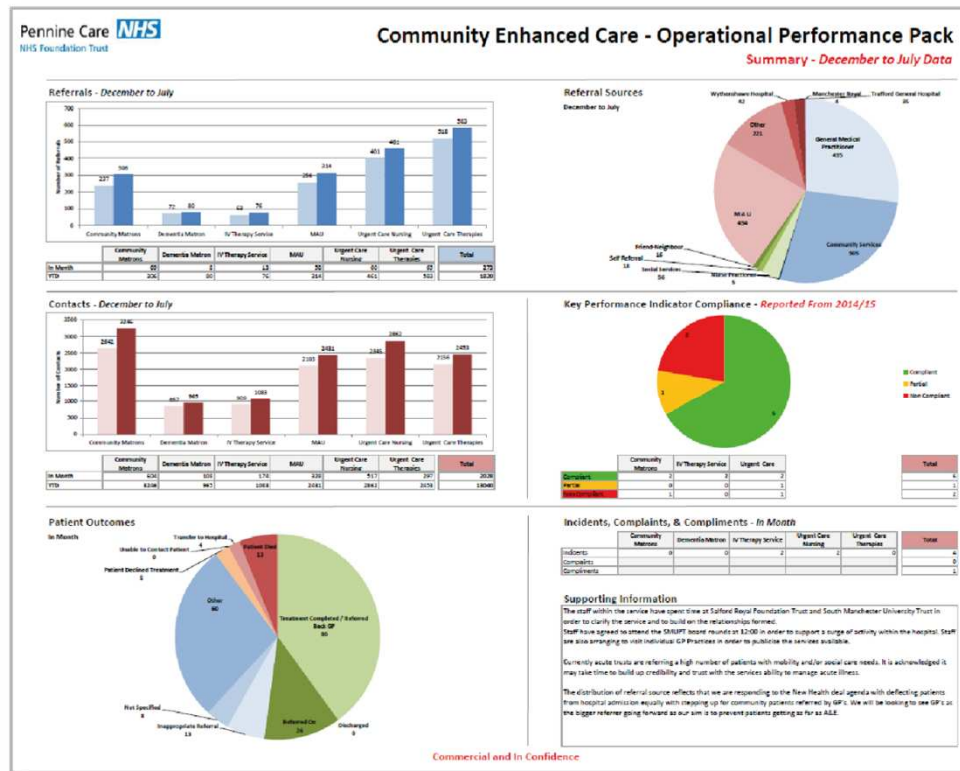
Neighbourhood Teams:

- ⌘ GPs
- ⌘ Matrons
- ⌘ District Nurses
- ⌘ Reablement
- ⌘ Social workers
- ⌘ Commissioning of care packages
- ⌘ Review team
- ⌘ OT/Physio elderly health
- ⌘ Social care assessors
- ⌘ Community geriatrician

Central Assessment Service:

- ⌘ IV Therapy
- ⌘ Rapid response
- ⌘ EDT
- ⌘ Urgent Care
- ⌘ Single Point of Access
- ⌘ Hospital teams

Community Enhanced Care



- § Launched November 2013, designed to prevent unnecessary admissions to acute
- § Critical to our integrated care offer
- § Collaboration with commissioners for market insight
- § Underpinned by shared data, designed around a seamless pathway
- § It takes time and effort to achieve change – but we are beginning to see the results

Hospital – “Not a day more”

Front Door Team – Triage Team

8am - midnight

Triage Nurse



ED Consultant

A&E / Discharge navigators:

- Community Nurse
- Social Worker
- CHC
- Reablement
- Voluntary Service
- RAID
- Pharmacy
- Community Health and Social Care

Access to Night Sitters, ICT beds, Respite, Equipment



Transport home

ONE RECORD – ONE PLAN

Handover to daytime staff in Community Teams

Toolkit to provide access to:

- Property
- Falls team
- Community alarm
- Community pharmacy
- Assistance to move bed downstairs
- Equipment (commode, etc)
- Step-down beds
- Portable bed

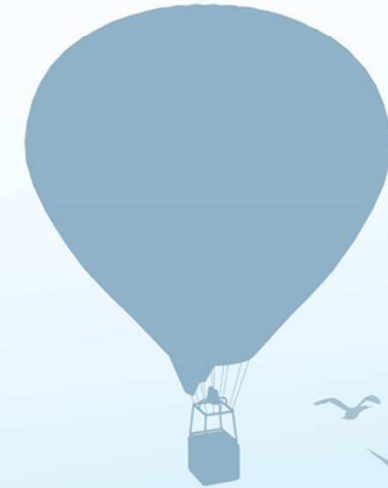


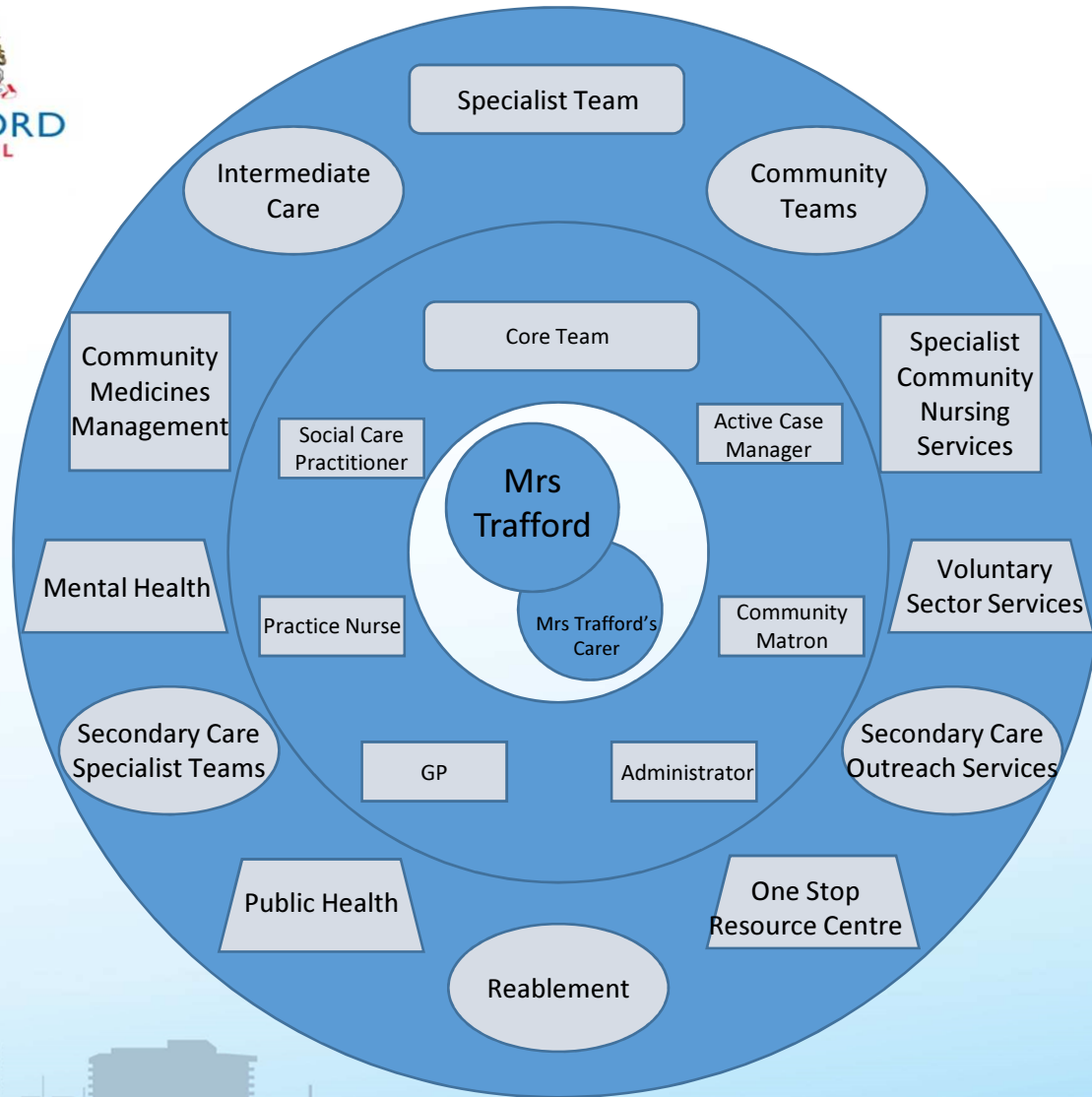
Early Intervention at Home

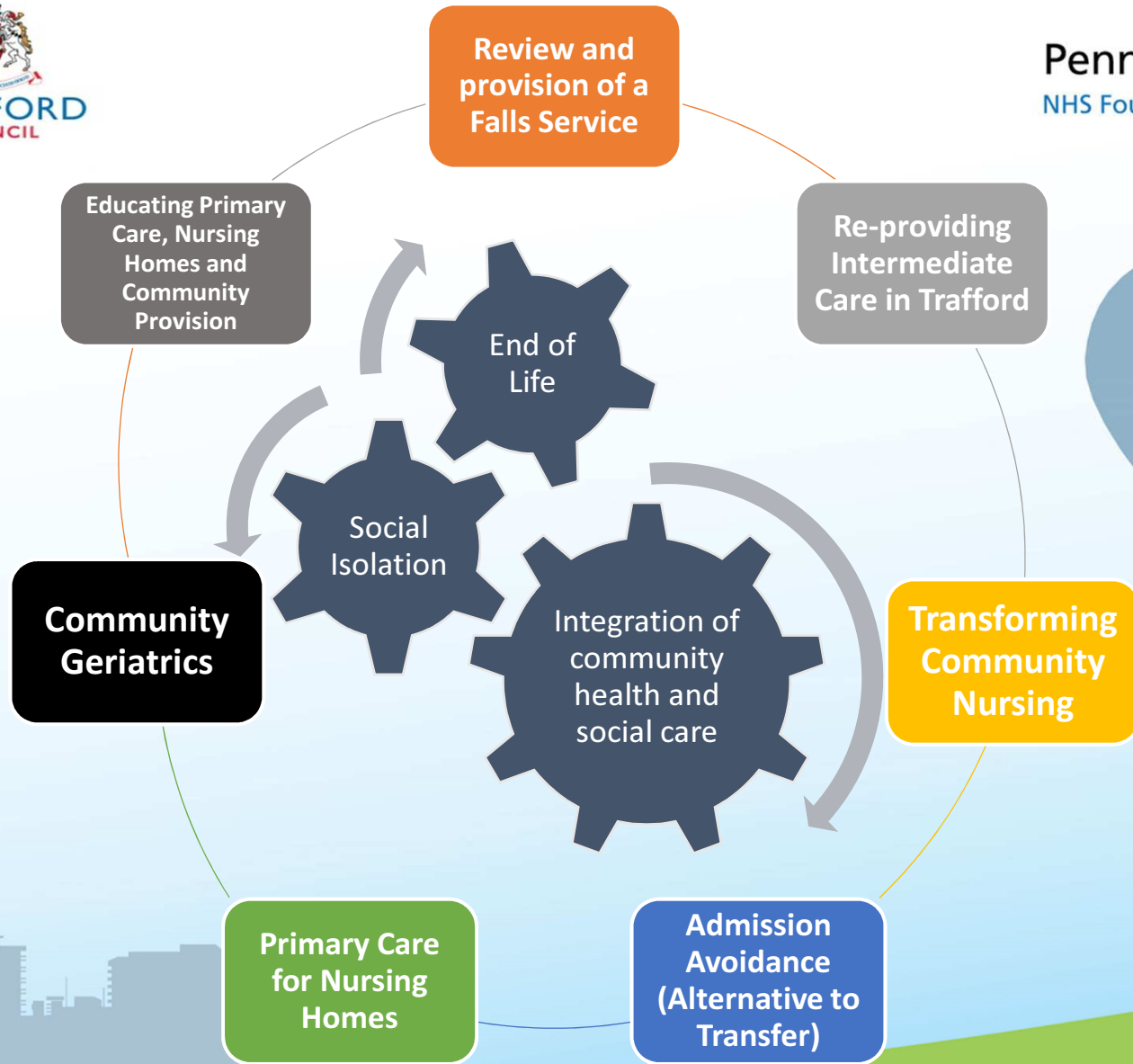
Patient's records flagged
Wifi access / Mobile working



Advance Plan with Crisis Response completed by Integrated Community Teams
Available 8am – 8pm and linked up to Core Team









Any Questions?

